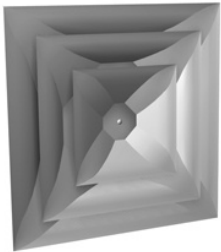


# RF PECK

Commercial HVAC Equipment

## 2024 Stock Catalog



### SALES OFFICES

**ALBANY, NEW YORK**  
22 Computer Dr West  
Albany, NY 12205  
(518) 869-3541

**BUFFALO, NEW YORK**  
132 Cayuga Road  
Buffalo, NY 14225  
(716) 276-8933

**ROCHESTER, NEW YORK**  
889 Atlantic Avenue  
Rochester, NY 14609  
(585) 697-0836

**SYRACUSE, NEW YORK**  
6412 Baird Avenue  
Syracuse, NY 13206  
(315) 471-0105

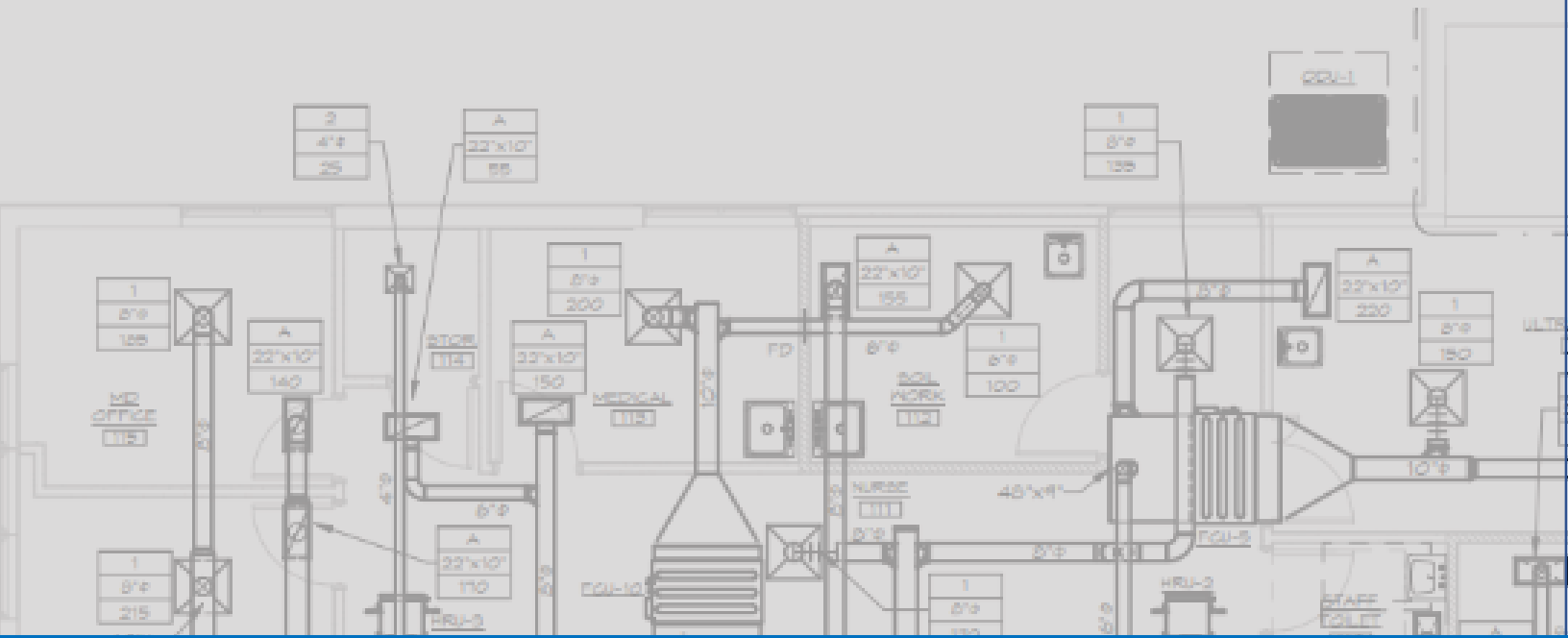
Warehouse Locations: Rochester & Syracuse

IMMEDIATE SHIPPING OR PICKUP AVAILABLE •



• [www.rfpeck.com](http://www.rfpeck.com)



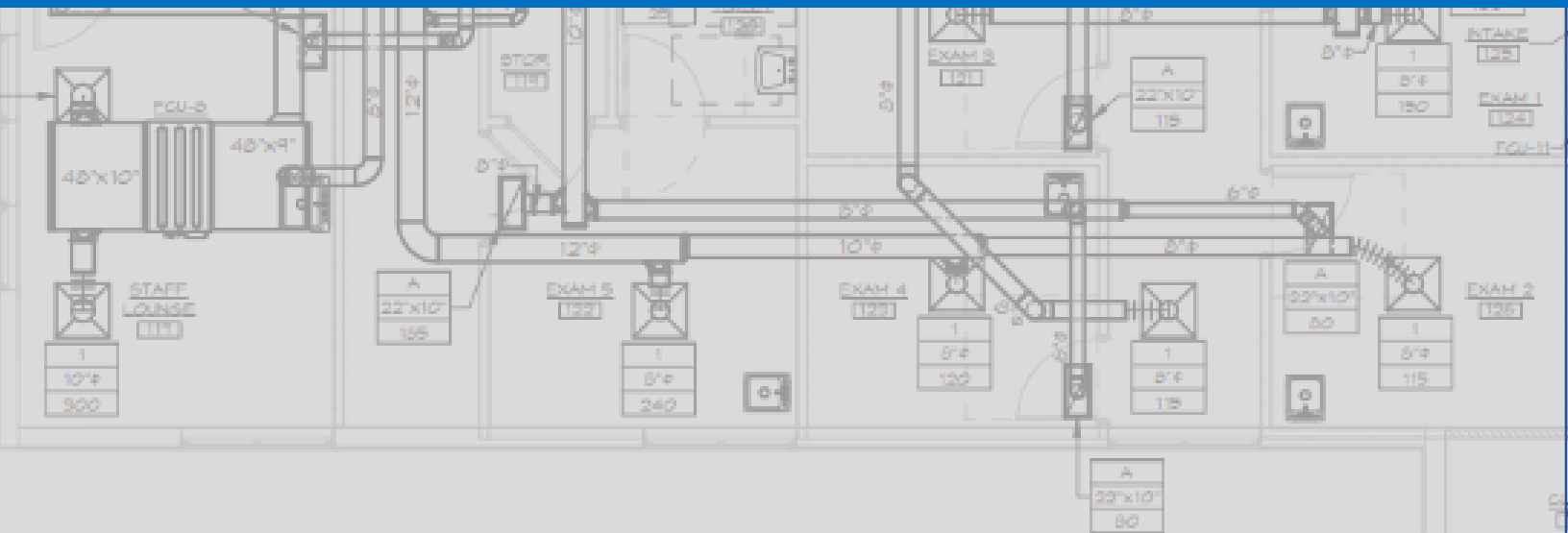


For all equipment use:

**.65 Multiplier**

plus freight\*

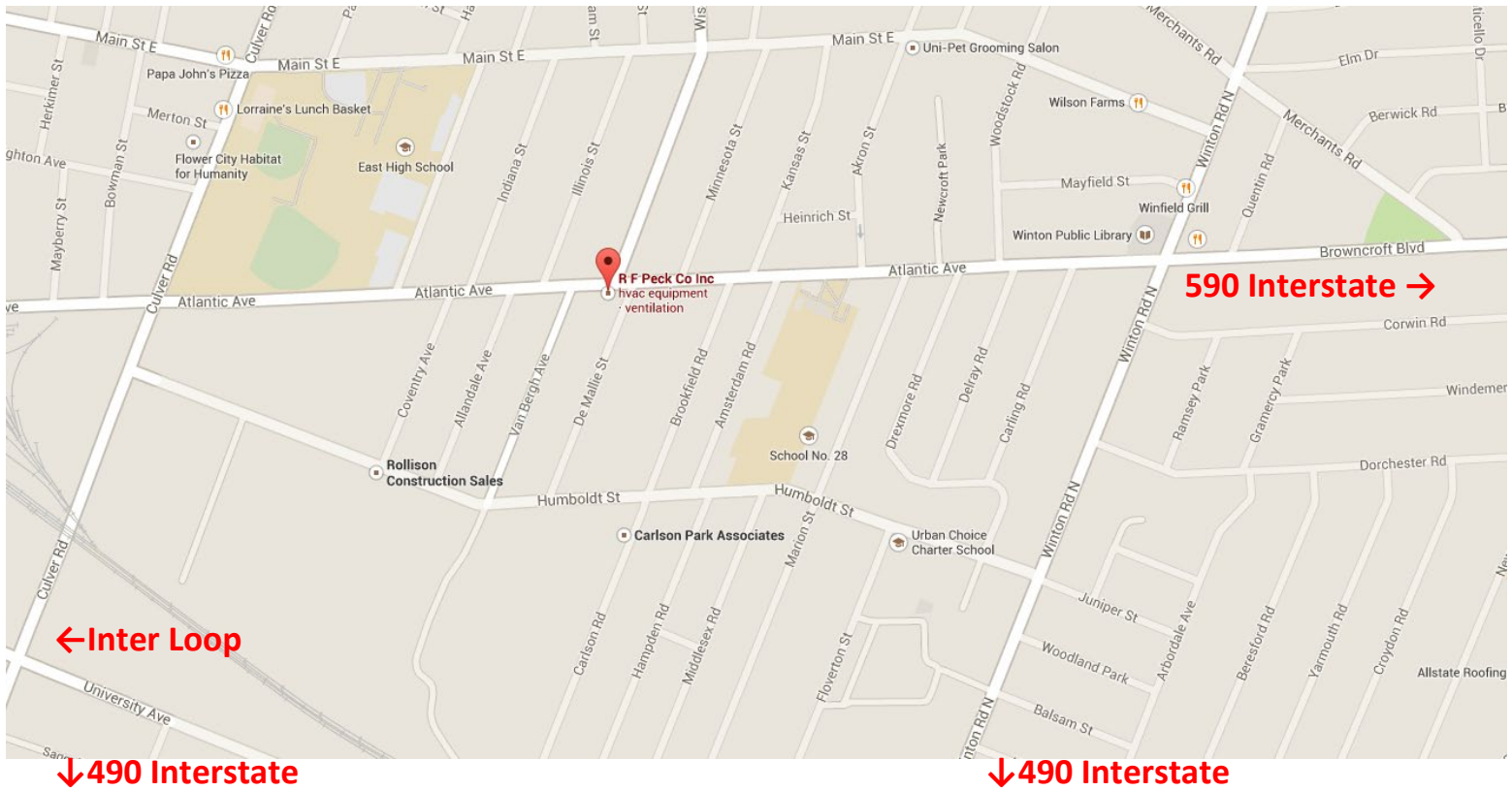
\*If not directly picked up from the warehouse



# Rochester Warehouse

889 Atlantic Avenue  
Rochester, NY 14609  
585-697-0836 phone

**\*\* Located between Culver Road and North Winton in Downtown Rochester \*\***



---

## Table of Contents

<u>Items</u>	<u>Page</u>
Ceiling Fan	6
Diffusers	3
Equipment Rails	6
Fan Accessories	6
Fire Dampers	5
Grilles	3
Pipe Portals	6
RG&D Accessories	4
Variable Frequency Drives	7
VAV's & Coils	5

## TERMS & CONDITIONS

- Prices:** Prices are F.O.B Rochester, New York. Prices are subject to change without notice.
- Terms:** All orders are to be paid with either cash, bank approved check, or credit card unless prior credit has been approved. Credit terms to be Net thirty (30) days from date of invoice. A service charge of 1 ½% per month will be charged after thirty (30) days until payment is received. Also reasonable attorneys' fees in the amount of fifteen percent (15%) of outstanding balance shall be assessed in the event it becomes necessary to collect and indebtedness hereunder by or through any attorney-at-law.
- Taxes:** No taxes are included in the sale price.
- Warranty:** R.F. Peck Co., Inc. makes no express warranties as to the goods sold but extends to the buyer the manufacturer's warranty which is available upon request.
- Returns:** No products shall be returned unless *approved in writing* and will be subject to transportation, handling charges and restocking charges.
- Consequential:** R.F. Peck Co., Inc. shall not be liable for any consequential, incidental or contingent damages whatsoever

## Supply Diffusers

### SCD



**Features:**

- Material: Steel
- 3 Concentric Cones
- Optional Damper (pg. 5)
- White Finish

T-Bar Lay-in			
Panel	Neck Size	CFM Range	List Price
11 ¾ x 11 ¾	6	100-200	\$55.00
	8	200-360	\$55.00
23 ¾ x 23 ¾	6	100-200	\$71.00
	8	200-360	\$71.00
	10	360-550	\$71.00
	12	550-780	\$71.00

### SPD



**Features:**

- Material: Steel
- Easily Removable Plaque Face
- Optional Damper (pg. 5)
- White Finish

T-Bar Lay-in			
Panel	Neck Size	CFM Range	List Price
23 ¾ x 23 ¾	6	100-200	\$75.00
	8	200-360	\$75.00
	10	360-550	\$75.00
	12	550-780	\$75.00

## Return Grilles

### 530



**Features:**

- Material: Steel
- Fixed Louvers
- White Finish

T-Bar Lay-in		
Neck Size	CFM Range	List Price
22 x 10	320-720	\$65.00
22 x 22	620-1200	\$95.00

### VCR8E

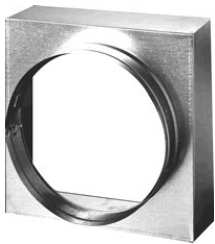


**Features:**

- Material: Steel
- Round Butterfly Damper
- Mounts to diffuser neck

Neck Size	List Price
6	\$26.00
8	\$28.00
10	\$28.00
12	\$30.00

### SQ/RD

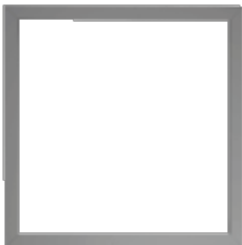


**Features:**

- Material: Steel
- Fit over diffuser neck
- 3" high square with 3" high collar
- Round neck sizes 1/8" under

Square Dimension	Round Size	List Price
12 x 12	6	\$22.00
	8	\$22.00
	10	\$22.00
	12	\$22.00
22 x 10	6	\$26.00
	8	\$26.00
	10	\$26.00
22 x 22	6	\$34.00
	8	\$34.00
	10	\$34.00
	12	\$34.00

### SPF



**Features:**

- Material: Steel
- For drywall ceilings

Size	List Price
12 x 12	\$38.00
24 x 24	\$53.00

## Air Terminal Units & Coils

### SDV



**Features:**

- Material: 22ga zinc coated steel housing
- Mechanically sealed & gasketed, leak resistant construction
- Internal insulation ¾" dual density (meets NFPA 90a & UL 181 requirements)
- Rectangular discharge opening with slip & drive cleat duct connection
- Fiber Free Lining & Control Enclosure
- Gauge taps are standard

Inlet Size	CFM Range	Imperial Units (inches)			List Price	
		Outlet	Inlet	Length		
6	0-450	12	8	6	20 1/8	\$380.00
8	0-800	12	10	8	20 1/8	\$448.00
10	0-1350	14	12 ½	10	20 1/8	\$475.00
12	0-2150	16	15	12	20 1/8	\$510.00

### 2 Row Coil



Unit Size	Width	Height	MBH*	List Price
6	12	8	15.7	\$340.00
8	12	10	26.4	\$355.00
10	14	12 ½	38.2	\$405.00
12	16	15	52	\$484.00

\* Based on 180° EWT/60° EAT



## Dampers & Actuators

### 0130H Fire



**Features:**

- Square damper with round transition
- Can be mounted vertically or horizontally
- 1-1/2 hour rated

Size	List Price
6"	\$73.00
8"	\$80.00
10"	\$90.00
12"	\$95.00

## Ceiling Fans

### Gemini



**Features:**

- Direct Drive
- Gravity Backdraft damper included
- Speed Controller available (below)

Model	Motor RPM	0.00"SP CFM/Sones	0.125" SP CFM/Sones	0.250"SP CFM/Sones	0.375"SP CFM/Sones	.500"SP CFM/Sones	0.625"SP CFM/Sones	0.750"SP CFM/Sones	List Price
GC148	1075	152/2.5	142/2.5	132/2.5	120/2.5	108/3.0	94/3.0	78/3.5	\$365.00

### Speed Controller



Device	Control Mode	List Price
Speed Controller	5 amp	\$86.00
Reverse T'stat	Cooling only	\$46.15

**Features:**

- Available for Direct Drive units
- Can be mounted remotely or at the unit
- Used to adjust unit to desired capacity

### Reverse Acting T'Stat



**Features:**

- Cooling Only
- Rough in dims: 4.75"H x 2.9"W x 1.5"D
- Range: 50-90°F



## Equipment Rails, Pipe Portals & Roof Curbs

### Rails



**Features:**

- All welded steel support
- 18ga galvanized steel construction
- 12" & 18" high
- 2" Flashing Strip
- Factory Installed Wood Nailer

Length	12"H List	18"H List
3 Feet	\$220.00	\$320.00
5 Feet	\$290.00	\$450.00

### Roof Curbs



**Features:**

- 18" high
- Rigid insulation
- Nominal 2" x 2" wood nailer

Curb O.D.	List Price
12 x 12	\$155.00
17 x 17	\$200.00
19 x 19	\$210.00
23 x 23	\$250.00

### Pipe Portals



**Features:**

- 12 x 12 x 12"H & 18"H OD Curb – *priced separately*
- Plastic Cap, 1 or 4 Pipe Silicone Rubber Boot, Stainless Steel Clamp assembly – *priced separately*

Size	List Price
1 Pipe Cap Assembly	\$200.00
4 Pipe Cap Assembly	\$200.00
12 x 12 x 12"H Curb	\$140.00
12 x 12 x 18"H Curb	\$155.00





## Variable Frequency Drives



Base Drives				
Voltage	HP	Model	List Price	Stock Location*
208V	2	ACH580-01-07A5-2	\$1,520.00	S
208V	5	ACH580-01-017A-2	\$1,860.00	S
208V	10	ACH580-01-031A-2	\$2,640.00	S
480V	3	ACH580-01-04A8-4	\$1,500.00	A/S/R
480V	5	ACH580-01-07A6-4	\$1,700.00	A/S/R
480V	7.5	ACH580-01-012A-4	\$1,900.00	A/S/R
480V	10	ACH580-01-014A-4	\$2,200.00	R
480V	15	ACH580-01-023A-4	\$2,800.00	A/S/R
480V	20	ACH580-01-027A-4	\$3,500.00	A/S/R
480V	25	ACH580-01-034A-4	\$4,400.00	R
480V	30	ACH580-01-044A-4	\$5,200.00	A
480V	40	ACH580-01-052A-4	\$6,300.00	A
480V	50	ACH580-01-065A-4	\$8,000.00	A

**ACH580** General Purpose HVAC Variable Frequency Drive. UL Type I Enclosure, Advanced Operator Keypad, 5% Input Swing Choke (Reactor), EMI/RFI Filter, and embedded N2, FLN, Modbus & BACnet included as standard.



Drives with Bypass, Circuit Breaker and Service Switch				
Voltage	HP	Model	List Price	Stock Location*
480V	3	ACH580-VCR-04A8-4+F267	\$3,400.00	A/S/R
480V	5	ACH580-VCR-07A6-4+F267	\$3,635.00	R
480V	7.5	ACH580-VCR-012A-4+F267	\$3,800.00	A/S/R
480V	10	ACH580-VCR-014A-4+F267	\$4,075.00	R
480V	15	ACH580-VCR-023A-4+F267	\$4,740.00	A/S/R
480V	20	ACH580-VCR-027A-4+F267	\$5,640.00	A/S/R
480V	25	ACH580-VCR-034A-4+F267	\$6,640.00	R

**ACH580** UH Drive with E-Clipse Bypass, UL Type I Enclosure, Main Circuit Breaker, Operator Advanced Bypass Keypad, Output & Bypass Contractors, Drive Input Service Switch, Pass Through Bypass I/O including N2, FLN, Modbus & BACnet included as standard

\*Location      **A: Albany**                      **S: Syracuse**                      **R: Rochester**  
    22 Computer Dr West      6412 Baird Avenue      889 Atlantic Avenue

**Factory Authorized Start-up Not Included\*\***

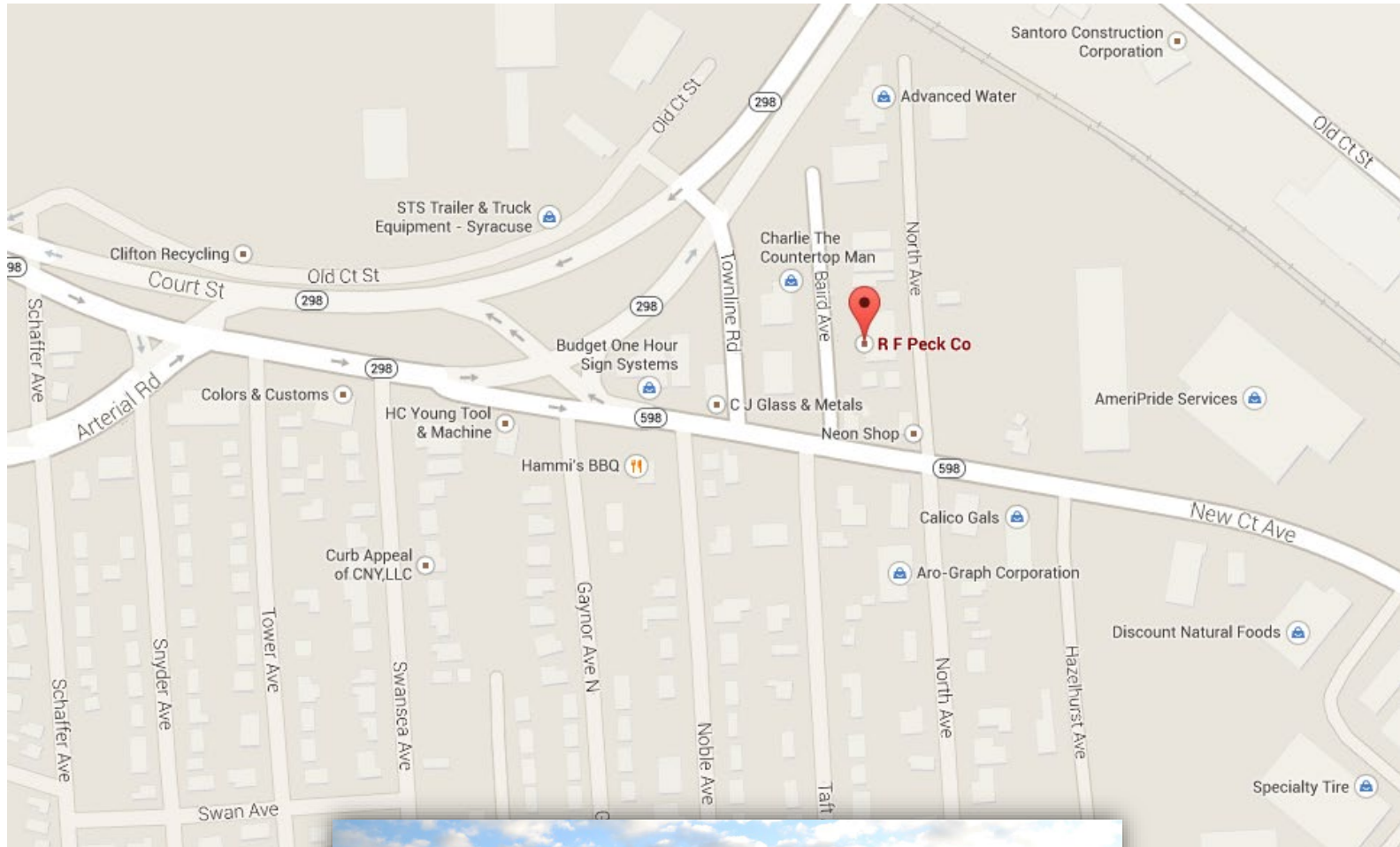
**Warranty (w/o Factory Authorized Start-up):** 1 year Factory Warranty includes parts only

**\*\*Start Up:** For an additional cost we can provide factory certified start up. Certified start up includes 2 year parts and labor warranty. Please contact your R.F. Peck representative for details

# Syracuse Warehouse

6412 Baird Avenue  
Syracuse, NY 13206  
315-471-0105 phone  
315-471-2045 fax

**\*\* Warehouse entrance is on North Ave., off of New Court Ave. on backside of building \*\***



---

## Table of Contents

<u>Items</u>	<u>Page</u>
Access Doors	21
Brick Vents	21
Ceiling Fan	18
Dampers	20
Diffusers	10,11
Fan Accessories	19
Grilles	12,13
Louvers	21
RG&D Accessories	14
Roof Caps	19
Roof Fan	16
Vibration Hangers/Isolators	22,23
Wall Caps	19

### TERMS & CONDITIONS

**Prices:** Prices are F.O.B Syracuse, New York. Prices are subject to change without notice.

**Terms:** All orders are to be paid with either cash, bank approved check, or credit card unless prior credit has been approved. Credit terms to be Net thirty (30) days from date of invoice. A service charge of 1 ½% per month will be charged after thirty (30) days until payment is received. Also reasonable attorneys' fees in the amount of fifteen percent (15%) of outstanding balance shall be assessed in the event it becomes necessary to collect and indebtedness hereunder by or through any attorney-at-law.

**Taxes:** No taxes are included in the sale price.

**Warranty:** R.F. Peck Co., Inc. makes no express warranties as to the goods sold but extends to the buyer the manufacturer's warranty which is available upon request.

**Returns:** No products shall be returned unless *approved in writing* and will be subject to transportation, handling charges and restocking charges.

**Consequential:** R.F. Peck Co., Inc. shall not be liable for any consequential, incidental or contingent damages whatsoever

## Supply Diffusers

### SCD



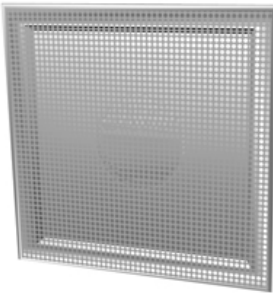
**Features:**

- Material: Steel
- 3 Concentric Cones
- Optional Damper (pg. 17)
- White Finish

T-Bar Lay-in			
Panel	Neck Size	CFM Range	List Price
11 ¾ x 11 ¾	6	100-200	\$55.00
	8	200-360	\$55.00
23 ¾ x 23 ¾	6	100-200	\$71.00
	8	200-360	\$71.00
	10	360-550	\$71.00
	12	550-780	\$71.00
	14	780-1200	\$71.00

## Return Diffusers

### PDDR

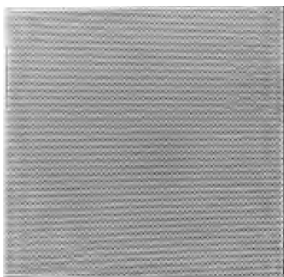


**Features:**

- Material: Steel
- Hinged Removable Perforated Face with Round Neck
- Optional Round Damper (pg. 17)
- White Finish

T-Bar Lay-in			
Panel	Neck Size	CFM Range	List Price
23 ¾ x 23 ¾	6	100-200	\$67.00
	8	200-360	\$67.00
	10	360-550	\$67.00
	12	550-780	\$67.00
	14	518-1036	\$67.00
	16	736-1227	\$90.00
23 ¾ x 11 ¾	22 x 10	1375	\$71.00
23 ¾ x 23 ¾	22 x 22	3000	\$65.00

### PFRF



**Features:**

- Material: Steel
- Perforated Ceiling Panel
- Non-ducted Return
- White Finish

T-Bar Lay-in			
Panel/Face	Neck Size	CFM Range	List Price
11 ¾ x 11 ¾	10 x 10	840	\$28.00
23 ¾ x 11 ¾	22 x 10	1375	\$30.00
23 ¾ x 23 ¾	22 x 22	3000	\$42.00

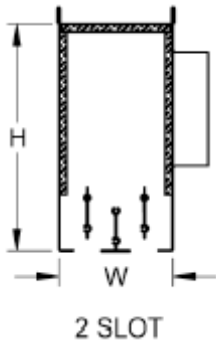
## Slot Diffusers

**TBDI4100**



**Features:**

- Material
  - Shell – Coated Steel
  - Pattern Controllers – Extruded Aluminum
  - Blade Gasket - Vinyl
- Blades Factory Installed and Field Adjustable for Left, Right or Vertical Airflows
- Spring Rotates up for Blade Removal
- Internal Insulation
- 1" slot width
- Lay-in Frame
- Black Finish

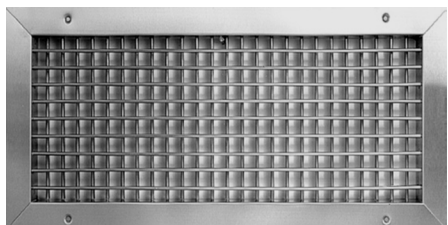


Inlet Dimensions			
Listed Inlet Size	Actual Inlet Dimension	W	H
8"	4" x 10.125" Oval	4"	8"
10"	4" x 13.25" Oval	4"	8"
12"	6" x 15.218" Oval	4"	11"

Inlet Size	Length	# of Slots	Slot Width	CFM	List Price	List Price w/ Auxiliary Frame
8	24	2	1	135	\$192.00	\$232.00
8,10, 12	48	2	1	164-707	\$256.00	\$306.00

**Supply Grilles**

**520D**



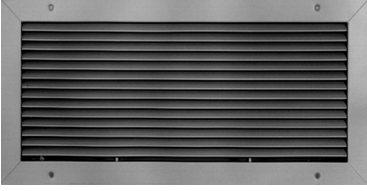
**Features:**

- Material: Steel
- Double Deflection Grille
- Horizontal Front Blades
- Opposed Blade Damper
- White Finish

Surface Mount with Screwholes						
Size	CFM Range	List Price		Size	CFM Range	List Price
6 x 6	55-220	\$69.00		16 x 12	335-1180	\$123.00
8 x 4	170-275	\$60.00		16 x 16	480-1500	\$155.00
8 x 6	80-320	\$69.00		18 x 6	245-900	\$98.00
8 x 8	115-470	\$73.00		18 x 10	320-1280	\$119.00
10 x 4	250-350	\$69.00		18 x 12	400-1340	\$135.00
10 x 6	100-410	\$69.00		20 x 6	205-750	\$103.00
10 x 8	140-500	\$78.00		20 x 8	245-900	\$117.00
10 x 10	180-620	\$85.00		20 x 10	335-1420	\$125.00
12 x 4	100-410	\$73.00		20 x 12	335-1180	\$138.00
12 x 6	115-470	\$75.00		24 x 6	320-1100	\$112.00
12 x 8	180-610	\$89.00		24 x 8	335-1180	\$135.00
12 x 10	205-800	\$96.00		24 x 10	400-1340	\$148.00
12 x 12	270-920	\$103.00		24 x 12	540-1600	\$165.00
14 x 6	140-500	\$85.00		24 x 18	835-2400	\$221.00
14 x 8	205-750	\$94.00		30 x 10	540-1600	\$195.00
14 x 10	245-970	\$106.00		30 x 18	1080-3000	\$295.00
16 x 6	220-840	\$89.00		36 x 12	835-2400	\$253.00
16 x 8	245-900	\$103.00		36 x 18	1290-350	\$343.00
16 x 10	270-1080	\$112.00				

## Return Grilles

**530**



**Features:**

- Material: Steel
- Single Deflection Grille
- Horizontal Front Blades
- White Finish

Surface Mount with Screwholes					
Size	CFM Range	List Price	Size	CFM Range	List Price
6 x 6	36-150	\$37.00	16 x 8	162-450	\$52.00
8 x 6	52-200	\$37.00	16 x 10	182-455	\$56.00
8 x 8	78-250	\$37.00	16 x 12	236-600	\$59.00
10 x 6	68-230	\$36.00	16 x 16	320-780	\$65.00
10 x 8	92-300	\$44.00	18 x 10	214-642	\$59.00
10 x 10	120-360	\$48.00	18 x 12	268-670	\$63.00
12 x 6	78-250	\$44.00	18 x 18	380-840	\$75.00
12 x 8	120-360	\$44.00	22 x10 Lay-in	250-700	\$65.00
12 x 10	138-483	\$48.00	22 x22 Lay-in	1000-1400	\$95.00
12 x 12	182-500	\$52.00	24 x 10	268-670	\$65.00
14 x 6	92-300	\$44.00	24 x 12	360-840	\$67.00
14 x 8	138-400	\$48.00	24 x 14	416-1040	\$76.00
14 x 10	162-486	\$52.00	24 x 16	490-1225	\$79.00
14 x 12	214-642	\$56.00	24 x 24	1083-1450	\$103.00
14 x 14	236-600	\$59.00	36 x 24	1116-1900	\$145.00

**530FF**

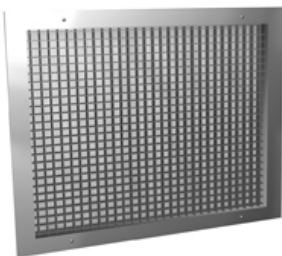


**Features:**

- Material: Steel
- Filter Grille used for 1" filters
- Face fits inside frame
- Removable Face
- Positive Locking Latch
- Filter not included
- White Finish

T-Bar Lay-in			
Panel	Size	Max CFM	List Price
23 ¾ x 23 ¾	20 x 20 T-Bar	2500	\$200.00

**80**

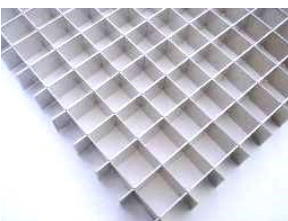


**Features:**

- Material: Aluminum
- Egg Crate Face
- White Finish

Surface Mount with Screwholes		
Size	CFM Range	List Price
12 x 12	270-750	\$55.00
24 x 24	620-1200	\$125.00
T-Bar Lay-in		
Size	CFM Range	List Price
22 x 10	320-720	\$70.00
22 x 22	620-1200	\$110.00

**80PL**



**Features:**

- Material: Plastic
- Egg Crate Face
- White Finish

T-Bar Lay-in	
Neck Size	List Price
24 x 24	\$40.00
48 x 24	\$55.00

### VCR8E



**Features:**

- Material: Steel
- Round Butterfly Damper
- Mounts to diffuser neck

Neck Size	List Price
6	\$26.00
8	\$28.00
10	\$28.00
12	\$30.00
14	\$45.00

### SQ/RD

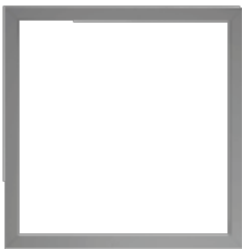


**Features:**

- Material: Steel
- Fit over diffuser neck
- 3" high square with 3" high collar
- Round neck sizes 1/8" under

Square Dimension	Round Size	List Price
6 x 6	6	\$19.00
8 x 8	6	\$20.00
	8	\$20.00
10 x 10	8	\$21.00
	10	\$21.00
12 x 12	10	\$22.00
	12	\$22.00
18 x 18	16	\$28.00
	14	\$34.00
22 X 22	16	\$34.00
	18	\$34.00

### SPF



**Features:**

- Material: Steel
- For drywall ceilings
- White finish

Size	List Price
12 x 12	\$38.00
24 x 24	\$53.00



## Recommended Rates of Air Change Per Building Type

	Minute Per Air Change		Minute Per Air Change		Minute Per Air Change		Minute Per Air Change
<b>GENERAL</b>		<b>HOSPITALS</b>		<b>HOTEL</b>		<b>PLANTS/FACTORIES</b>	
Corridors . . . . .	60-20	Disinfecting Room . . . .	2-5	Dance Hall . . . . .	3-8	General Plant	
Kitchens . . . . .	1-3	Consulting Room . . . . .	2-8	Gallery . . . . .	6-12	Bakeries . . . . .	1-3
Living Rooms . . . . .	2-4	Office Room . . . . .	3-10	Washing Room . . . . .	1-4	Dry Cleaners . . . . .	1-5
Meeting Rooms . . . . .	4-10	Operating Room . . . . .	1-4	<b>MACHINE ROOMS</b>		Foundries . . . . .	1-4
Office . . . . .	2-8	Respiratory . . . . .	2-6	Boiler Room . . . . .	2-4	Glass Plants . . . . .	1-2
Residences . . . . .	2-5	Patients . . . . .	5-10	Compressor Room . . . . .	2-4	Machine Shop . . . . .	3-5
Toilet: Private . . . . .	1-3	Waiting Room . . . . .	4-8	Engine Room . . . . .	1-2	Mills (Paper) . . . . .	2-3
Public . . . . .	2-5	<b>INSTITUTIONAL</b>		Generating Room . . . . .	2-5	Mills (Textiles) . . . . .	5-15
<b>RECREATIONAL</b>		Assembly Hall . . . . .	3-10	Transformer . . . . .	1-5	Shop (General Vent) . . . .	3-10
Bars . . . . .	2-4	Auditoriums . . . . .	4-15	Turbine Room . . . . .	2-6	Spinning Factory . . . . .	4-12
Bowling Alley . . . . .	2-8	Banks . . . . .	3-10	<b>FOOD STORES</b>		Warehouse . . . . .	2-10
Gymnasium . . . . .	2-10	Churches . . . . .	4-15	Banquet Hall . . . . .	3-6		
Recreational Room . . . .	2-8	Library . . . . .	5-12	Kitchens . . . . .	1-3		
Theaters . . . . .	3-8			Restaurants . . . . .	5-10		
				Tempura House . . . . .	1-3		

## Methods of Calculating Air Volume

### RATE OF AIR CHANGE METHOD:

- Step 1. Find total cubic feet of air space within the building or room to be ventilated.
- Step 2. Determine number of air changes required. Generally mandated by local health codes or use above Air Change Table Guide.
- Step 3. CFM required =  $\frac{\text{Building/Room volume in cubic feet}}{\text{Minute/Air Change}}$

#### EXAMPLE:

Paper mill is 30 ft. x 50 ft. with 10 ft. high ceiling.  
 2-3 minutes per air change required for good ventilation.  
 30 ft. x 50 ft. x 10 ft. = 15,000 cubic ft. to be moved every 2 minutes or 7,500 CFM.

## Fan Laws

The fan laws are a series of formulas used to predict the performance of a fan at parameters other than those listed in the multiratings catalog tables.

**FAN LAW # 1:** Effect of varying the fan speed, with the fan size and density remaining constant:

- a. CFM varies as the RPM :  $\frac{CFM_2}{CFM_1} = \frac{RPM_2}{RPM_1}$
- b. SP varies as the RPM<sup>2</sup> :  $\frac{SP_2}{SP_1} = \left[ \frac{RPM_2}{RPM_1} \right]^2$
- c. BHP varies as the RPM<sup>3</sup> :  $\frac{BHP_2}{BHP_1} = \left[ \frac{RPM_2}{RPM_1} \right]^3$

**Fan Law # 2:** Effect of changed density, with the fan size and speed remaining constant:

- a. The CFM does not change :  $CFM_2 = CFM_1$
- b. The SP varies as the density :  $\frac{SP_2}{SP_1} = \frac{d_2}{d_1}$
- c. The BHP varies as the density :  $\frac{BHP_2}{BHP_1} = \frac{d_2}{d_1}$

*Subscript 1 is the catalog rating of selected fan  
 Subscript 2 is the desired rating*

## Roof Fans

### ACE Spun Aluminum Downblast Roof Exhaust Fan

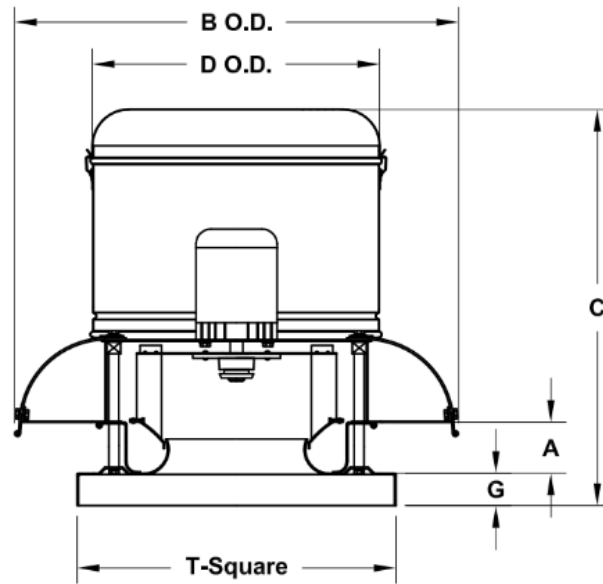


**Features:**

- Direct Drive
- Gravity Backdraft Damper included
- Speed Controller Pricing on page 13
- Roof curb dimensions on page 11

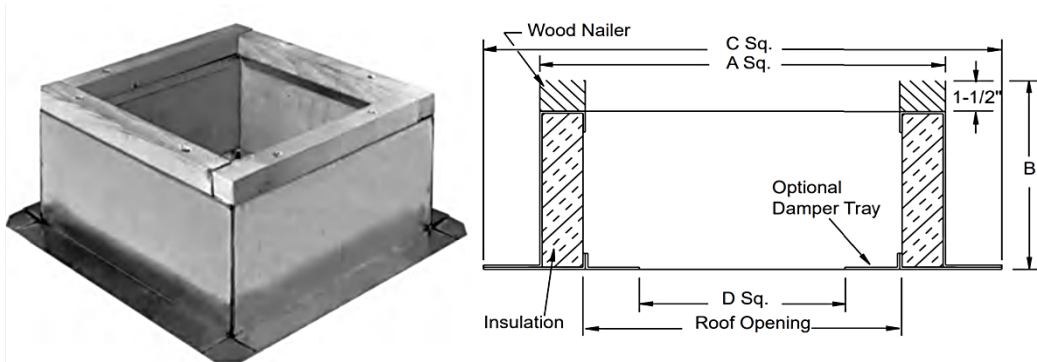
Fan Model	HP	RPM	Tip Speed	0.000" SP		0.125" SP		0.250" SP		0.375" SP		0.500" SP		Speed Control	List Price	w/ curb
				CFM	Sones	CFM	Sones	CFM	Sones	CFM	Sones	CFM	Sones			
70C15DL	1/20	1700	3112	171	5.35	131	5.0	113	4.8	91	4.7	-		5 amp	\$875.00	\$1,065.00
70C15DM	1/20	1670	3057	242	5.9	187	5.6	157	5.2	102	4.6	-		5 amp	\$875.00	\$1,065.00
70C15DH	1/20	1550	2837	305	5.2	249	5.2	194	5.1	135	5.0	-		5 amp	\$835.00	\$1,025.00
90C15DL	1/8	1715	4047	489	8.7	445	8.4	410	8.1	372	7.8	331	7.3	5 amp	\$960.00	\$1,150.00
90C15DM	1/8	1670	3841	658	9.5	600	9.0	564	8.5	469	8.5	412	7.9	5 amp	\$960.00	\$1,150.00
90C15DH	1/8	1550	3658	865	9.1	759	9.1	650	8.9	509	8.4	411	8.0	5 amp	\$950.00	\$1,140.00
100C15DL	1/8	1665	4362	583	11.3	545	11.1	505	10.9	467	10.6	427	10.3	5 amp	\$970.00	\$1,160.00
100C15DH	1/8	1550	4061	967	11.0	856	11.0	766	10.8	667	10.7	552	10.5	5 amp	\$970.00	\$1,160.00
120C13D	1/4	1300	4084	1393	9.6	1316	9.6	1236	9.5	1152	9.2	1070	8.9	5 amp	\$1,440.00	\$1,650.00
135C13D	1/2	1300	4595	1983	12.2	1897	12.2	1808	12.2	1715	12.0	1622	11.7	10 amp	\$1,490.00	\$1,700.00
150C13D	3/4	1300	5105	2720	15.3	2624	15.3	2527	15.3	2427	15.1	2322	14.9	10 amp	\$1,790.00	\$2,040.00

## Fan Dimension Information



### ACE-D Direct Drive Dimension Data

Fan Size	A	B	C	D	G	T Sq.	Roof Opening Square	Shipping Weight
70	1-3/4	13-5/8	13-13/16	16-3/4	2	18	13-1/2	20
90	2-1/2	18-3/4	16-13/16	16-3/4	2	18	13-1/2	28
100	2-1/2	18-3/4	16-13/16	16-3/4	2	18	13-1/2	30
120	1-7/16	28-7/16	26-9/16	20-3/8	2	20	15-1/2	67
135	1-15/16	28-7/16	27-1/16	20-3/8	2	20	15-1/2	72
150	2-13/16	32-7/8	29-3/16	23-13/16	2	24	19-1/2	90



### Roof Curb Dimension Data

Fan Size	A Sq	B	C Sq	D Sq	Roof Opening Square	Curb Size to Order
70-100	16-1/2	9-1/2	20-1/2	9-3/4	13-1/2	17 x 17
120-135	18-1/2	9-1/2	22-1/2	11-3/4	15-1/2	19 x 19
150	22-1/2	9-1/2	26-1/2	15-3/4	19-1/2	23 x 23



## Ceiling Fans

### Gemini



#### Features:

- Direct Drive
- Gravity Backdraft Damper included
- Speed Controller Pricing on page 22
- Inline Kits available for GC146, GC148 & GC186

Model	Motor RPM	0.00"SP CFM/Sones	0.125" SP CFM/Sones	0.250"SP CFM/Sones	0.375"SP CFM/Sones	.500"SP CFM/Sones	0.625"SP CFM/Sones	0.750"SP CFM/Sones	List Price
GC146	900	114/1.2	103/1.2	90/1.3	77/1.5	64/2.0	50/2.5	36/3.0	\$365.00
GC148	1075	152/2.5	142/2.5	132/2.5	120/2.5	108/3.0	94/3.0	78/3.5	\$365.00
GC186	1100	231/5.5	225/5.5	218/5.5	209/5.5	199/5.0	186/5.0	170/5.0	\$470.00
GC542	1600	391/5.5	377/5.5	361/5.5	340/5.5	314/5.5	285/5.0	248/4.5	\$645.00
GC622	1400	501/3.5	486/3.5	461/3.0	433/3.0	392/3.0	339/3.0	-	\$725.00

Model	Inline Kit
GC146	\$70.00
GC148	\$70.00
GC186	\$70.00

Model	Speed Controller
GC146	5 amp
GC148	5 amp
GC186	5 amp
GC542	5 amp
GC622	5 amp

\*Pricing on page 22

## Fan Accessories

### Speed Controller



5 amp

10 amp

**Features:**

- Available for Direct Drive units
- Can be mounted remotely or at the unit
- Used to adjust unit to desired capacity

Control Mode	List Price
5 amp	\$86.00
10 amp	\$180.00

### Roof Curbs



**Features:**

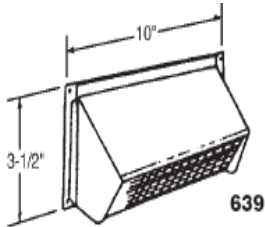
- 12" high
- Rigid insulation
- Nominal 2" x 2" wood nailer

Curb O.D.	List Price
14 x 14	\$175.00
16 x 16	\$185.00
17 x 17	\$190.00
19 x 19	\$210.00
23 x 23	\$250.00
29 x 29	\$350.00

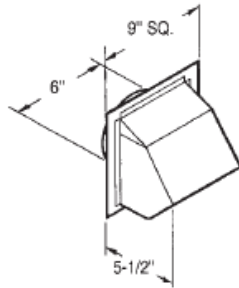


## Wall & Roof Caps

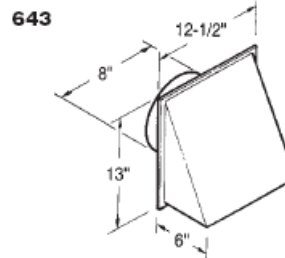
### Wall Caps



639



641

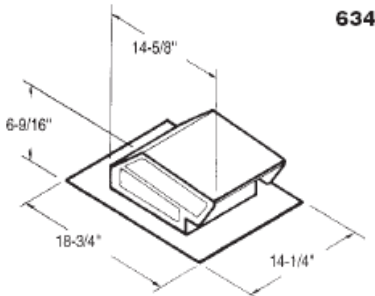


643

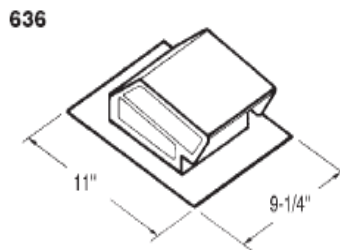
Item	List Price
639	\$65.00
641	\$92.00
643	\$155.00

- Steel baked black enamel finish
- Spring-loaded backdraft damper and built-in alum bird screen
- For 3 1/2" x 10" duct
- Aluminum – natural finish
- Built-in backdraft damper
- For 6" round duct
- Aluminum – natural finish
- Built-in backdraft damper
- For 8" round duct

### Roof Caps



634



636

Item	List Price
634	\$72.00
636	\$42.00

- Steel black electrically bonded epoxy finish
- Built-in backdraft damper & birdscreen
- For 10-2/4" x 10 3/4" or up to 10" round
- Steel black electrically bonded epoxy finish
- Built-in backdraft damper & birdscreen
- For 4" round duct

## Dampers & Actuators

### 0110H Fire

**Features:**

- Can be mounted vertically or horizontally
- 1-1/2 hour rated
- Duct size – ¼”
- 4 ¼” deep

Size W x H	List Price	Size W x H	List Price
6 x 6	\$38.00	16 x 12	\$74.00
8 x 6	\$38.00	16 x 16	\$82.00
8 x 8	\$38.00	18 x 10	\$77.00
10 x 8	\$49.00	18 x 12	\$82.00
10 x 10	\$52.00	18 x 18	\$98.00
12 x 6	\$49.00	20 x 8	\$71.00
12 x 8	\$52.00	20 x 12	\$82.00
12 x 10	\$52.00	20 x 20	\$98.00
12 x 12	\$58.00	22 x 10	\$82.00
14 x 8	\$63.00	24 x 10	\$82.00
14 x 12	\$74.00	24 x 12	\$90.00
14 x 14	\$82.00	24 x 16	\$98.00
16 x 8	\$63.00	24 x 24	\$118.00

### 0130H Fire



**Features:**

- Square damper with round transition
- Can be mounted vertically or horizontally
- 1-1/2 hour rated
- Loose links available if needed

Size	List Price
6”	\$73.00
8”	\$80.00
10”	\$90.00
12”	\$95.00
14”	\$135.00
16”	\$135.00
18”	\$160.00

Fusible Links	List Price
165°	\$15.00
212°	\$16.00

### 1020 Control



**Features:**

- 16ga galvanized steel construction
- Blade & jamb seals

Size W x H	List Price	Size W x H	List Price
12 x 12	\$210.00	24 x 24	\$400.00
16 x 16	\$260.00	24 x 36	\$480.00
20 x 20	\$334.00	30 x 30	\$465.00
24 x 10	\$248.00	36 x 12	\$240.00
24 x 12	\$248.00	36 x 24	\$385.00
24 x 16	\$287.00		

### 1370 Backdraft



**Features:**

- Blades are roll formed aluminum alloy
- Polyurethane blade seals reduce backflow & noise

Size	List Price
12 x 12	\$150.00
16 x 16	\$180.00
24 x 24	\$272.00

### Belimo

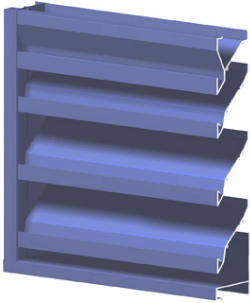


Model	Type	Mounting	Max Sq Ft	Voltage	List Price
LF24	Electric	External/Internal	5-7	24V	\$340.00
LF120	Electric	External/Internal	5-7	120V	\$380.00
NF24	Electric	External/Internal	13-15	24V	\$430.00
NF120	Electric	External/Internal	13-15	120V	\$485.00
½” SHAFT QUAD	Manual				\$21.00

## Louvers & Brick Vents



1604D



**Features:**

- 4" Deep Louver
- Material: Extruded Aluminum
- 45° Drainable Stationary Blade
- ½" Mesh Aluminum Birdscreen

Size	List Price
12 x 12	\$200.00
16 x 16	\$245.00
24 x 12	\$240.00
24 x 16	\$270.00
24 x 24	\$330.00
30 x 30	\$510.00
36 x 24	\$430.00



168EX



**Features:**

- Brick Vent
- Material: Extruded Aluminum
- ½" Mesh Aluminum Birdscreen

Size	List Price
16½ x 7½	\$180.00

## Access Doors



Hinged



**Features:**

- Door Panel – 24ga Galvanized Steel
- Frame – 22ga Galvanized Steel
- Insulation – 1" Fiberglass

Size	List Price
6 x 6	\$33.00
8 x 8	\$40.00
10 x 10	\$44.00
12 x 12	\$49.00
14 x 14	\$58.00
16 x 16	\$72.00
18 x 18	\$82.00
24 x 24	\$115.00

Cam



Vibration Isolators



**Model BA  
Spring Mount**



**Model HNSA  
Spring Hangers**



**Model HSF/A  
Spring Flex Hangers**

Floor Mounted, Spring Type BA				Hangers, Spring Type HNSA				Hangers, Spring Type HSF/A			
Type	Height	Max Load lbs.	List Price	Type	Height	Max Load lbs.	List Price	Type	Height	Max Load lbs.	List Price
BA-121	4 ½"	50	\$80.00	HNSA-A3-121	8"	50	\$137.00	HSF-041	4 ½"	23	\$31.00
BA-122	4 ½"	80	\$80.00	HNSA-A4-122	8"	80	\$137.00	HSF-042	4 ½"	40	\$31.00
BA-123	4 ½"	130	\$80.00	HNSA-B1-123	8"	130	\$137.00	HSF-043	4 ½"	65	\$31.00
BA-124	4 ½"	210	\$80.00	HNSA-B2-124	8"	210	\$137.00	HSF-044	4 ½"	90	\$31.00
BA-125	4 ½"	300	\$80.00	HNSA-B3-125	8"	300	\$137.00	HSF-045	4 ½"	185	\$31.00
BA-126	4 ½"	370	\$80.00	HNSA-BE-126	8"	370	\$137.00	HSA-124	4 ½"	210	\$87.00
								HAS-125	4 ½"	300	\$87.00
								HAS-126	4 ½"	370	\$87.00



Vibration Isolators



**Model HND**  
Rubber-In-Shear Hangers



**Model FMD**  
Rubber-In-Shear Mounts

Hangers, Rubber-In-Shear Type HND				Floor Mounted, Rubber-In-Shear Type FMD			
Type	Height	Max Load lbs.	List Price	Type	Height	Max Load lbs.	List Price
HND-A-1	3"	30	\$21.00	FMD-A-1	1 ¼"	30	\$32.00
HND-A-2	3"	40	\$21.00	FMD-A-2	1 ¼"	40	\$32.00
HND-A-3	3"	70	\$21.00	FMD-A-3	1 ¼"	70	\$32.00
HND-A-4	3"	120	\$21.00	FMD-A-4	1 ¼"	115	\$32.00
HND-B-1	4"	165	\$21.00	FMD-B-1	1 ¾"	130	\$45.00
HND-B-2	4"	235	\$45.00	FMD-B-2	1 ¾"	165	\$45.00
HND-B-3	4"	375	\$45.00	FMD-B-3	1 ¾"	235	\$45.00
HND-B-4	4"	572	\$45.00	FMD-B-4	1 ¾"	375	\$45.00

Shear Flex Pads



**Features:**

- Material: Special Rubber
- Extremely High Deflection Rate
- Alternately Raised Ribs provide effective vibration isolation in both high & low load ranges
- Max Load: 60lbs
- Load Range: 15-55 psi

Size	List Price
18" x 18" x 3/8"	\$100.00

**FOR OUR CURRENT LINE CARD  
PLEASE VISIT OUR WEBSITE OR  
USE THE QR CODE BELOW**

